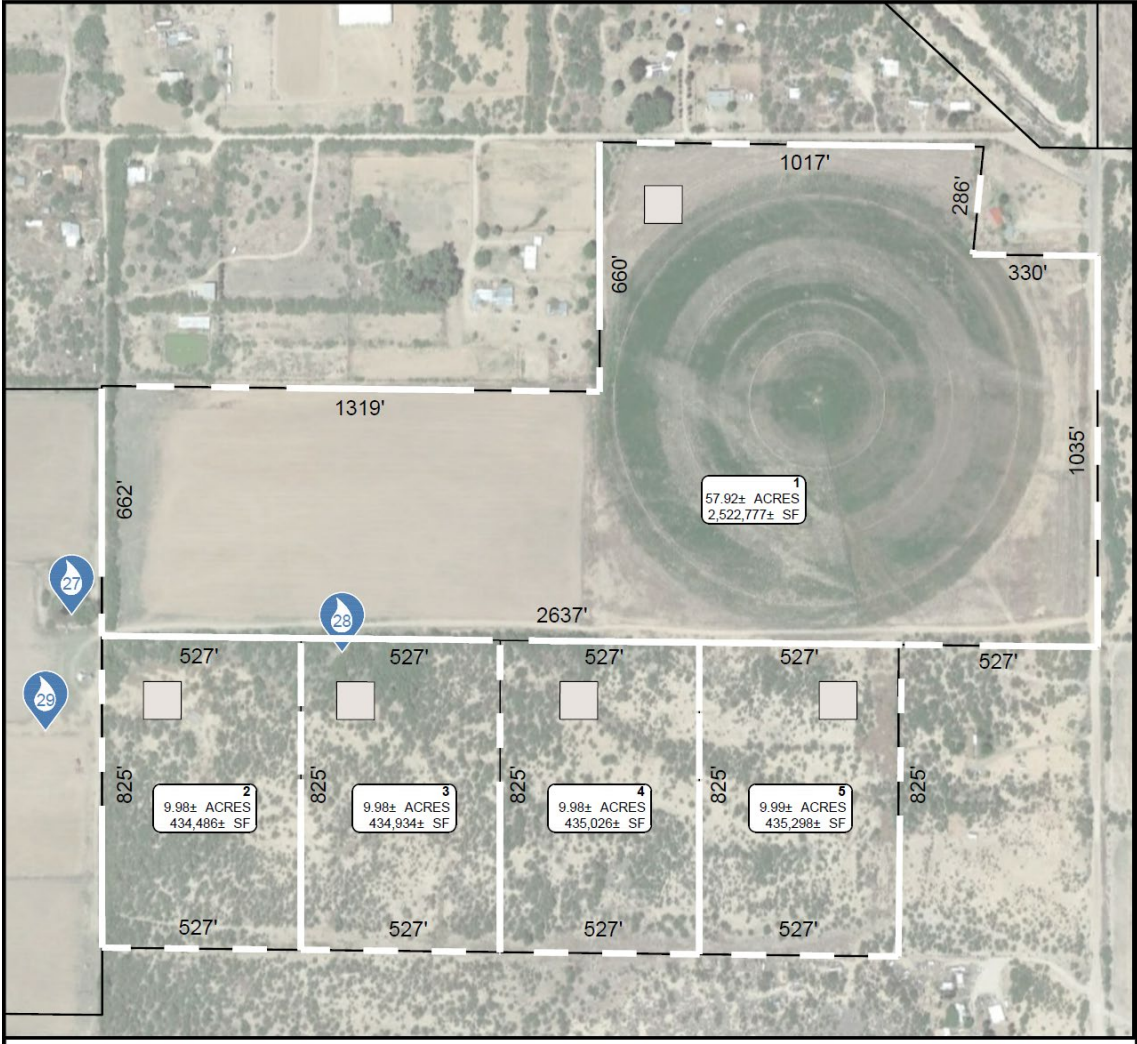


Curtis Farms East, 97 acres. Divide to 4 Estate Lots and a 57 acre farm – sell 4 estate lots and keep the Farm. The 120’ Foot Deep Irrigation well is perfect to supply the estate lots with plenty of water and countless gallons remaining to sell or use for irrigation. Developer financing available, 35% down, 3% interest and up to a 20 year term.

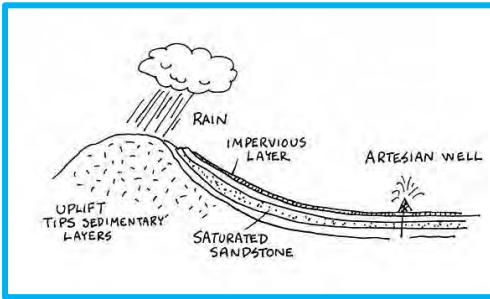
Curtis Farms East Organized for 4 estate lots of approximately 10 acres each and a Farm of 57 acres with a center pivot irrigated alfalfa field. 97 acres in total.



Private water system included:

- 120 foot deep artesian well with static level of 30 feet.
 - 12-inch, 260 feet deep, well can produce up to 1,000 gpm for irrigation and could fill float tanks for each estate lot

- Artesian Well



This well is artesian and water rises from 120 feet below the surface to a static level of 30 feet from the top. The cost of pumping water from a well is the cost of lifting the water from the static level to the surface, not from the entire depth of the well. The artesian

nature of this well lifts the water naturally. A pump indicates minimal drawdown.

- Center Pivot irrigation.

FrameUpNow

Consider engaging FrameUpNow to provide a skeleton for a [Barndominium](#).

A practical farm and ranch home house farming equipment and a practical and beautiful home. <https://www.frameupnow.com/products/gold-rush->



We offer seller financing on the land: 3% interest with 35% down and amortizing terms of 5, 10, 15 and 20 years.



St David Springs – Rodger Ford – 520-906-7575



**Alain Hartman - Professional Brokerage
Services 520-332-6000
Alain@HCREINC.COM**